



STATISTICAL NEWS

PRICE STATISTICS

NATIONAL BUREAU OF STATISTICS

www.nigerianstat.gov.ng

Plot 762 Independence Avenue, Central Business Area, Garki, Abuja

ISBN 0764-1954

No. 498

13th OCTOBER 2011

CONSUMER PRICE INDEX: SEPTEMBER 2011

(BASE PERIOD NOVEMBER 2009 = 100)

BRIEF METHODOLOGY:

This edition of the Statistical News contains the revised Consumer Price Index (CPI) based on Nigeria Living Standard Survey (NLSS) 2003/2004. The consumption expenditure data were revalued to November 2009 which is the base period for the revised CPI.

The May 2003 and September 1985 based indices are being continued using factors derived from the new CPI. All of these indices will yield the same price change for any commodity group contained in all the series. A new sub index – Imported Food Index- is available in the revised CPI.

A TOTAL of 10534 informants spread across the country provide price data for the compilation of the New CPI each month. Also, 740 product specifications are priced in each centre for computation of the New CPI.

Note: The urban and rural indices were weighted with the ratio of their populations to the national ie 0.455 and 0.545 respectively to compute the composite indices at the 12 COICOP functions and all items levels. This may cause variance between a recalculated all items index using the weights published on table 2 and the published all items index because the published weights were computed only from consumption expenditure survey result.

For more enquiries relating to the CPI revision contact kocimo@nigerianstat.gov.ng or kocimo@yahoo.com

ALL ITEMS INDEX

The Composite Consumer Price Index which measures inflation rose to 10.3 percent year-on-year in September 2011. This is higher than 9.3 percent recorded in the previous month in the new CPI series. The monthly change of the CPI was 1.41 percent increase when compared with August 2011.

The year-on-year average consumer price level as at September 2011 for Urban and Rural dwellers rose by 8.4 and 11.9 percent respectively.

The urban All Items monthly index rose by 1.4 percent while the corresponding rural index also rose by the same percentage margin when compared with their preceding month.

The biggest contributors to the consumer inflation were the high prices of electricity and food items.

The percentage change in the average composite CPI for the twelve-month period ending September 2011 over the average of the CPI for the previous twelve-month period was 11.4. This was slightly lower than the 11.6 percent recorded for the preceding month.

The corresponding 12-month average percent change for urban and rural indices were 9.2 and 13.2 respectively.

FOOD INDEX

Average monthly food prices rose by 0.9 percent in September 2011 when compared with August 2011 figure. The level of the Composite Food Index was higher than the corresponding level a year ago by 9.5 percent. This was higher than 8.7 percent recorded in the previous month. The rise in the food inflation was mainly due to the increasing cost of yam, cooking oil and fish. The average annual rate of rise of the index was 11.2 percent for the twelve-month period ending September 2011.

ALL ITEMS LESS FARM PRODUCE

The “All items less Farm Produce” index which excludes the prices of agricultural products increased by 1.9 percent in September 2011 when compared with August 2011. The increase was mainly on some household items, building materials, diesel, kerosene and electricity charge.

In the twelve-month to September 2011, the index rose by 11.6 percent while the average annual rate of rise of the index was 11.9 percent for the twelve-month period ending September 2011.

QUARTERLY CPI CHANGE

The ‘All item index increased 3.4 percent in the third quarter of 2011 when compared with second quarter of the same year. This is higher than 1.4 percent recorded in the second quarter when compared against first quarter.

Table 1 Composite Consumer Price Index (Base November 2009 = 100)

	All Items Index				All Items less Farm Produce				Food				
	Monthly	Month-on change (%)	Year-on change (%)	12-Month average change (%)	Monthly	Month-on change (%)	Year-on change (%)	12-Month average change (%)	Monthly	Month-on change (%)	Year-on change (%)	12-Month average change (%)	
Weights	1000.0				535.94				507.03				
2008	Jan	79.1	1.4	8.6	5.5	84.4	2.1	2.5	7.9	75.5	0.5	12.6	2.9
	Feb	79.3	0.3	8.0	5.5	85.5	1.4	6.4	7.5	75.2	-0.5	8.7	3.3
	Mar	79.9	0.8	7.8	5.8	82.2	-3.9	0.5	6.8	78.2	4.1	12.4	4.2
	Apr	81.1	1.6	8.2	6.1	83.5	1.5	1.2	6.4	79.4	1.5	13.1	5.1
	May	82.7	1.9	9.7	6.5	85.7	2.7	3.3	6.3	80.8	1.7	14.7	6.1
	Jun	85.7	3.7	12.0	7.0	87.9	2.5	3.6	5.8	84.5	4.6	18.1	7.4
	Jul	87.6	2.2	14.0	7.8	89.4	1.7	4.8	5.4	86.7	2.6	20.9	9.0
	Aug	88.6	1.2	12.4	8.5	90.0	0.7	3.9	4.8	87.7	1.2	18.8	10.7
	Sep	89.6	1.1	13.0	9.2	91.3	1.4	6.9	4.5	88.5	0.8	17.1	12.3
	Oct	89.0	-0.6	14.7	10.1	90.8	-0.6	7.9	4.3	88.0	-0.5	19.2	14.0
	Nov	89.0	-0.05	14.8	10.9	90.3	-0.5	9.3	4.5	88.1	0.1	18.1	15.3
	Dec	89.7	0.8	15.1	11.6	91.2	1.0	10.4	5.1	88.6	0.6	18.0	16.1
2009	Jan	90.2	0.5	14.0	12.0	91.1	-0.1	8.0	5.5	89.5	0.9	18.4	16.5
	Feb	90.8	0.7	14.6	12.6	91.7	0.6	7.2	5.6	90.2	0.8	20.0	17.5
	Mar	91.4	0.6	14.4	13.1	92.0	0.3	11.8	6.5	90.9	0.8	16.2	17.7
	Apr	91.9	0.6	13.3	13.5	92.5	0.6	10.9	7.3	91.6	0.7	15.3	17.9
	May	93.6	1.8	13.2	13.8	94.2	1.8	9.9	7.8	93.5	2.0	15.7	17.9
	June	95.3	1.8	11.2	13.7	95.3	1.2	8.5	8.3	95.6	2.2	13.1	17.5
	July	97.3	2.1	11.1	13.4	96.8	1.5	8.3	8.6	97.9	2.4	12.9	16.8
	Aug	98.4	1.1	11.0	13.3	97.3	0.5	8.0	8.9	98.9	1.1	12.7	16.3
	Sep	98.9	0.5	10.4	13.1	98.1	0.8	7.4	8.9	99.5	0.6	12.5	15.9
	Oct	99.4	0.5	11.6	12.8	98.9	0.8	8.9	9.0	99.9	0.4	13.5	15.4
	Nov	100.0	0.7	12.4	12.6	100.0	1.1	10.7	9.1	100.0	0.1	13.5	15.0
	Dec	102.2	2.2	13.9	12.5	101.5	1.5	11.2	9.2	102.4	2.4	15.5	14.8
2010	Jan	103.1	1.0	14.4	12.6	102.1	0.6	12.1	9.6	103.7	1.3	15.9	14.7
	Feb	105.0	1.9	15.6	12.7	104.5	2.3	14.0	10.1	104.8	1.1	16.2	14.4
	Mar	104.9	-0.1	14.8	12.8	104.1	-0.4	13.2	10.3	105.3	0.4	15.8	14.4
	Apr	105.7	0.8	15.0	12.9	104.4	0.3	12.8	10.4	106.6	1.2	16.3	14.5
	May	105.7	-0.04	12.9	12.9	105.2	0.8	11.7	10.6	105.7	-0.8	13.0	14.3
	Jun	108.8	2.91	14.1	13.1	107.4	2.1	12.7	10.9	110.0	4.1	15.1	14.4
	Jul	109.9	1.08	13.0	13.3	107.7	0.3	11.3	11.2	111.6	1.5	14.0	14.5
	Aug	111.9	1.76	13.7	13.5	109.3	1.5	12.4	11.5	113.8	2.0	15.1	14.7
	Sep	112.4	0.46	13.6	13.8	110.7	1.3	12.8	12.0	114.0	0.1	14.6	14.9
	Oct	112.7	0.30	13.4	13.9	111.9	1.1	13.2	12.3	114.0	-0.0	14.1	14.9
	Nov	112.8	0.04	12.8	13.9	111.7	-0.1	11.7	12.4	114.4	0.3	14.4	15.0
	Dec	114.2	1.29	11.8	13.7	112.6	0.7	10.9	12.4	115.4	0.9	12.7	14.7
2011	Jan	115.6	1.20	12.1	13.5	114.5	1.7	12.1	12.4	114.3	-0.9	10.3	14.2
	Feb	116.7	0.96	11.1	13.2	115.5	0.9	10.6	12.1	117.7	2.9	12.2	13.9
	Mar	118.3	1.37	12.8	13.0	117.5	1.7	12.8	12.1	118.1	0.4	12.2	13.6
	Apr	117.7	-0.54	11.3	12.7	117.9	0.3	12.9	12.1	119.0	0.7	11.6	13.2
	May	118.7	0.91	12.4	12.6	118.9	0.9	13.0	12.2	118.5	-0.3	12.2	13.2
	Jun	119.9	0.97	10.2	12.3	119.8	0.7	11.5	12.1	120.1	1.3	9.2	12.7
	Jul	120.3	0.32	9.4	12.0	120.1	0.2	11.5	12.1	120.4	0.2	7.9	12.1
	Aug	122.3	1.67	9.3	11.6	121.2	0.9	10.9	12.0	123.7	2.7	8.7	11.6
	Sep	124.0	1.41	10.3	11.4	123.5	1.9	11.6	11.9	124.8	0.9	9.5	11.2

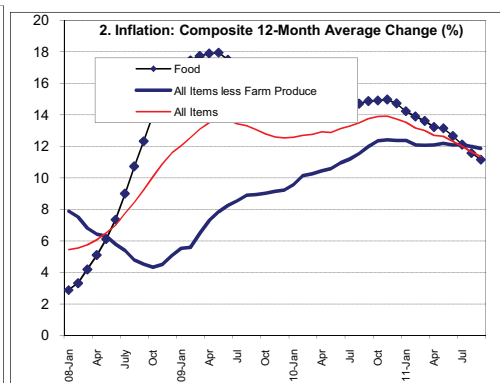
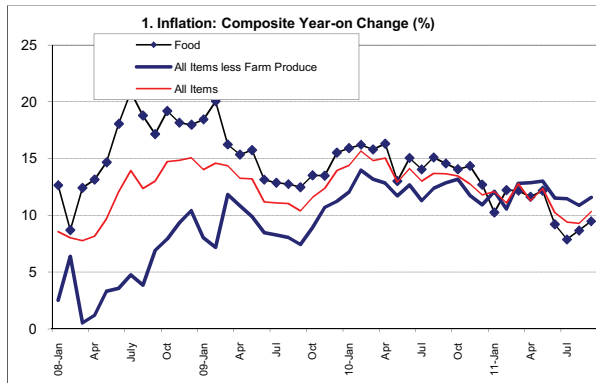


Table 2 Composite Consumer Price Index (Base November 2009 = 100)

	All Items	All Items less Farm Produce.	All Items less Energy and Energy	Imported Food	Food	Food & Non Alcoholic Bev.	Alcoholic Beverage, Tobacco and Kola	Clothing and Footwear	Housing Water, Electricity, Gas and Other Fuel	Furnishings & Household Equipment Maintenance.	Health.	Transport	Communication	Recreation & Culture.	Education	Restaurant & Hotels	Miscellaneous Goods & Services	Month-on (%)	Year-on (%)	12-month average (%)
Weights	1000	535.94	428.08	132.53	507.03	518	10.87	76.5	167.34	50.265	30.04	65.08	6.798	6.909	39.435	12.12	16.63			
2008 Jan	79.1	84.4	82.2		75.5	75.8	96.7	86.3	84.6	78.2	83.9	86.5	83.1	88.8	75.3	76.9	82.1	1.4	8.6	5.5
2008 Feb	79.3	85.5	84.9		75.2	75.4	95.7	86.6	85.2	78.5	83.4	88.4	82.9	87.1	75.5	78.4	81.8	0.3	8.0	5.5
2008 Mar	79.9	82.2	80.8		78.2	78.4	98.1	85.1	83.3	80.5	86.1	84.4	81.9	88.2	74.8	79.6	79.4	0.8	7.8	5.8
2008 Apr	81.1	83.5	83.0		79.4	79.7	97.7	89.4	84.3	81.6	89.4	88.6	93.9	87.9	73.7	82.8	80.5	1.6	8.2	6.1
2008 May	82.7	85.7	84.8		80.8	81.0	99.7	90.7	85.6	83.7	90.5	87.9	97.6	89.0	74.9	91.9	86.4	1.9	9.7	6.5
2008 Jun	85.7	87.9	88.4		84.5	84.6	99.4	92.8	88.4	86.3	91.6	88.3	96.5	88.7	78.4	94.3	86.4	3.7	12.0	7.0
2008 Jul	87.6	89.4	87.6		86.7	86.8	100.2	94.2	90.8	87.8	93.5	89.7	97.3	90.9	80.9	94.3	90.8	2.2	14.0	7.8
2008 Aug	88.6	90.0	89.4		87.7	87.8	100.3	95.7	92.5	87.4	92.4	88.6	97.3	92.4	83.7	97.8	88.0	1.2	12.4	8.5
2008 Sep	89.6	91.3	90.2		88.5	88.5	99.2	95.5	94.1	87.4	92.3	88.3	97.7	92.5	83.1	97.1	88.9	1.1	13.0	9.2
2008 Oct	89.0	90.8	90.5		88.0	88.1	97.8	96.0	93.3	88.0	93.3	88.8	97.3	92.9	84.7	97.6	90.5	-0.6	14.7	10.1
2008 Nov	89.0	90.3	90.1		88.1	88.2	97.6	95.9	92.0	87.1	94.2	89.2	97.1	93.9	84.9	98.0	91.1	-0.05	14.8	10.9
2008 Dec	89.7	91.2	91.7		88.6	88.7	97.5	96.9	93.5	87.1	96.1	90.9	97.1	93.5	87.6	99.5	92.9	0.8	15.1	11.6
2009 Jan	90.2	91.1	92.6		89.5	89.5	97.6	97.0	92.3	87.3	97.1	91.2	97.1	93.7	88.3	99.4	93.9	0.5	14.0	12.0
2009 Feb	90.8	91.7	92.6		90.2	90.2	98.5	97.0	92.6	87.4	98.6	90.2	97.1	92.8	88.1	100.4	94.1	0.7	14.6	12.6
2009 Mar	91.4	92.0	93.1		90.9	91.0	98.5	97.1	92.6	87.9	99.0	91.0	97.1	92.7	89.9	100.2	94.9	0.6	14.4	13.1
2009 Apr	91.9	92.5	94.1		91.6	91.7	99.1	97.5	92.9	89.6	101.1	94.4	97.1	93.4	89.3	101.3	95.4	0.6	13.3	13.5
2009 May	93.6	94.2	95.4		93.5	93.5	99.5	96.7	94.3	88.8	99.2	96.0	97.1	94.6	92.3	100.2	94.5	1.8	13.2	13.8
2009 June	95.3	95.3	96.6		95.6	95.6	99.7	97.1	96.3	89.6	100.1	94.0	97.1	95.0	92.6	101.1	97.8	1.8	11.2	13.7
2009 July	97.3	96.8	98.4		97.9	97.8	101.4	97.9	98.3	99.3	101.7	92.5	99.4	96.8	93.9	98.9	98.8	2.1	11.1	13.4
2009 Aug	98.4	97.3	97.7		98.9	98.9	100.2	99.1	98.4	100.2	101.8	93.1	101.5	98.1	99.4	101.2	100.0	1.1	11.0	13.3
2009 Sep	98.9	98.1	98.5		99.5	99.5	99.3	99.1	98.7	98.7	101.6	94.9	101.2	97.6	99.6	99.9	100.1	0.5	10.4	13.1
2009 Oct	99.4	98.9	99.1		99.9	99.9	99.7	99.6	99.5	99.1	102.3	96.0	100.4	97.5	97.7	99.0	99.7	0.5	11.6	12.8
2009 Nov	100.0	100.0	100.0	100.0	100.0	100.0	100.0	100.0	100.0	100.0	100.0	100.0	100.0	100.0	100.0	100.0	100.0	0.7	12.4	12.6
2009 Dec	102.2	101.5	101.9	101.5	102.4	102.7	101.9	101.5	100.2	101.7	101.8	101.8	100.0	101.9	101.5	102.6	101.7	2.2	13.9	12.5
2010 Jan	103.1	102.1	102.6	101.7	103.7	103.9	102.3	102.4	100.6	103.0	103.0	103.0	99.6	103.0	103.1	106.7	103.3	1.0	14.4	12.6
2010 Feb	105.0	104.5	105.0	103.2	104.8	105.4	102.6	103.4	102.3	104.7	104.9	104.7	100.3	99.4	106.0	106.3	105.9	1.9	15.6	12.7
2010 Mar	104.9	104.1	104.6	103.0	105.3	105.3	104.3	104.5	102.2	105.7	105.3	104.8	100.6	103.3	105.5	105.6	104.4	-0.1	14.8	12.8
2010 Apr	105.7	104.4	105.1	103.9	106.6	106.7	104.8	105.1	102.2	103.8	104.9	106.8	100.4	103.1	105.6	109.7	106.2	0.8	15.0	12.9
2010 May	105.7	105.2	106.5	104.9	105.7	106.2	103.8	105.9	102.1	102.6	104.8	106.3	100.2	103.3	108.6	110.1	107.2	-0.04	12.9	12.9
2010 Jun	108.8	107.4	108.6	109.6	110.0	110.2	108.5	109.1	104.8	110.7	108.5	107.4	102.1	102.6	106.6	106.9	109.6	2.91	14.1	13.1
2010 Jul	109.9	107.7	108.8	109.3	111.6	112.0	109.6	110.3	105.1	109.0	110.3	107.5	102.6	103.0	105.7	105.0	110.7	1.08	13.0	13.3
2010 Aug	111.9	109.3	110.4	109.3	113.8	114.1	112.3	112.8	106.2	110.3	112.3	108.6	100.6	105.0	106.0	107.3	111.2	1.76	13.7	13.5
2010 Sep	112.4	110.7	111.7	113.6	114.0	113.5	109.0	112.4	109.9	112.1	112.0	112.2	101.8	108.4	108.4	107.1	111.7	0.46	13.6	13.8
2010 Oct	112.7	111.9	112.0	114.1	114.0	114.1	111.7	112.8	111.0	113.2	114.8	107.1	102.9	109.6	110.1	108.5	110.6	0.30	13.4	13.9
2010 Nov	112.8	111.7	111.3	115.1	114.4	114.3	112.2	112.0	112.6	113.1	111.1	111.7	102.0	107.8	107.7	108.2	112.8	0.04	12.8	13.9
2010 Dec	114.2	112.6	112.5	115.4	115.4	115.5	111.9	113.7	113.2	113.2	112.7	112.9	102.4	107.8	109.1	109.6	112.1	1.29	11.8	13.7
2011 Jan	115.6	114.5	113.0	96.0	114.3	118.7	110.6	114.4	113.9	113.5	111.3	109.2	103.6	108.3	110.2	110.5	113.2	1.2	12.1	13.5
2011 Feb	116.7	115.5	115.5	124.0	117.7	117.9	113.4	116.0	114.7	115.6	114.7	117.2	104.9	106.3	110.6	112.3	114.2	0.96	11.1	13.2
2011 Mar	118.3	117.5	117.5	119.4	118.1	118.2	112.7	116.5	116.0	115.9	117.5	115.5	105.1	107.4	111.0	112.2	112.8	1.37	12.8	13.0
2011 Apr	117.7	117.9	117.9	119.1	119.0	118.0	114.5	116.2	121.0	115.4	117.2	114.8	105.1	107.1	111.4	113.3	114.7	-0.54	11.3	12.7
2011 May	118.7	118.9	119.0	120.6	118.5	118.5	115.1	118.2	121.2	116.6	116.6	115.7	105.7	107.4	111.9	113.8	115.6	0.91	12.4	12.6
2011 Jun	119.9	119.8	119.8	111.9	120.1	119.5	114.2	118.0	121.6	116.3	119.9	118.5	105.6	107.9	112.2	114.3	117.9	0.97	10.2	12.3
2011 Jul	120.3	120.1	119.9	112.6	120.4	120.2	112.4	117.7	122.5	117.6	118.3	120.7	106.2	111.1	112.6	115.0	119.8	0.32	9.4	12.0
2011 Aug	122.3	121.2	121.1	116.0	123.7	123.4	116.4	118.7	124.5	120.0	120.4	121.9	106.4	109.5	112.9	115.1	121.5	1.67	9.3	11.6
2011 Sep	124.0	123.5	122.7	117.6	124.8	124.2	116.2	119.9	126.1	119.2	122.3	122.3	106.2	109.8	113.8	115.7	121.6	1.41	10.3	11.4

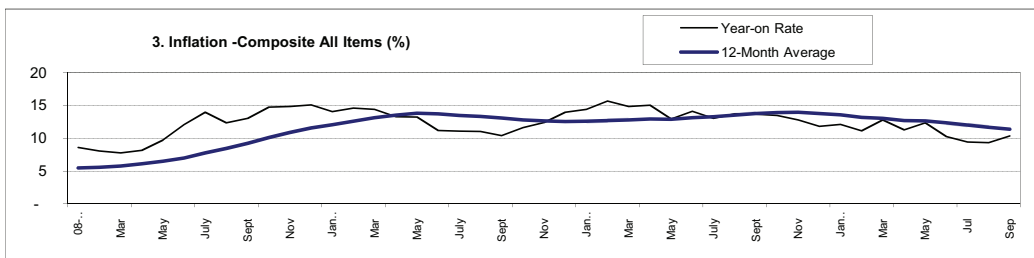


Table 2 Composite Consumer Price Index (Base May 2003 = 100)

	All Items	All Items less Farm Produce	All Items less Farm Produce, and Energy	Food	Food & Non Alcoholic Bev.	Alcoholic Beverage, Tobacco and Kola	Clothing and Footwear	Electricity, Gas and Other Fuel	Household Equipment, Maintenance, and Repair	Health	Transport	Communication	Recreation & Culture	Education	Restaurant & Hotels	Miscellaneous Goods & Services	Month-on (%)	Year-on (%)	12-month average (%)
Weight:	1000	409.5	335.9	637.6	644.1	20.6	32.1	181.0	38.2	13.6	42.4	1.1	8.9	2.1	12.9	3.0			
2008 Jan	169.8	175.4	158.8	162.9	163.2	161.0	142.5	205.1	147.7	141.7	165.9	197.7	145.3	182.6	213.3	156.2	1.4	8.6	5.5
2008 Feb	170.3	177.8	164.1	162.1	162.4	159.4	142.9	206.6	148.2	140.8	169.4	197.2	142.4	183.0	217.5	155.7	0.3	8.0	5.5
2008 Mar	171.6	170.9	156.1	168.7	168.9	163.4	140.5	201.8	152.0	145.4	161.8	194.8	144.4	181.5	220.9	151.0	0.8	7.8	5.8
2008 Apr	174.3	173.5	160.4	171.3	171.5	162.7	147.6	204.5	154.1	151.1	169.9	223.5	143.8	178.7	229.6	153.2	1.6	8.2	6.1
2008 May	177.6	178.1	163.8	174.2	174.4	166.1	149.8	207.4	158.1	153.0	168.6	232.1	145.7	181.6	255.0	164.3	1.9	9.7	6.5
2008 Jun	184.1	182.6	170.8	182.2	182.2	165.5	153.2	214.3	163.1	154.8	169.3	229.5	145.2	190.2	261.7	164.4	3.7	12.0	7.0
2008 Jul	188.1	185.8	169.3	187.0	186.9	166.9	155.5	220.1	165.8	157.9	171.9	231.4	148.7	196.2	261.6	172.7	2.2	14.0	7.8
2008 Aug	190.3	187.1	172.8	189.2	189.0	167.0	157.9	224.3	165.1	156.1	169.9	231.4	151.2	203.0	271.2	167.5	1.2	12.4	8.5
2008 Sep	192.4	189.8	174.2	190.8	190.6	165.2	157.7	228.1	165.0	156.0	169.3	232.5	151.4	201.5	269.2	169.2	1.1	13.0	9.2
2008 Oct	191.2	188.6	174.9	189.8	189.6	162.9	158.4	226.2	166.2	157.5	170.2	231.4	152.1	205.3	270.8	172.1	-0.6	14.7	10.1
2008 Nov	191.1	187.7	174.1	190.0	189.8	162.6	158.3	223.0	164.6	159.1	171.0	231.0	153.6	206.0	271.7	173.3	-0.05	14.8	10.9
2008 Dec	192.6	189.6	177.2	191.2	191.0	162.4	160.0	226.6	164.4	162.3	174.2	231.0	153.0	212.5	276.1	176.8	0.8	15.1	11.6
2009 Jan	193.6	189.4	178.8	192.9	192.7	162.5	160.2	223.7	164.8	164.1	174.9	230.9	153.3	214.1	275.6	178.7	0.5	14.0	12.0
2009 Feb	195.1	190.5	179.0	194.6	194.3	164.0	160.1	224.5	165.0	166.6	173.0	231.0	151.7	213.7	278.5	179.0	0.7	14.6	12.6
2009 Mar	196.2	191.2	180.0	196.1	195.9	164.0	160.2	224.4	165.9	167.3	174.4	230.9	151.6	218.1	277.9	180.6	0.6	14.4	13.1
2009 Apr	197.4	192.3	181.7	197.6	197.4	165.0	160.9	225.2	169.2	170.8	180.9	231.0	152.8	216.7	281.0	181.6	0.6	13.3	13.5
2009 May	201.0	195.7	184.4	201.6	201.4	165.7	159.6	228.7	167.6	167.5	184.0	231.0	154.7	223.8	278.0	179.8	1.8	13.2	13.8
2009 June	204.7	198.1	186.7	206.2	205.9	166.1	160.3	233.4	169.2	169.1	180.3	231.0	155.5	224.5	280.4	186.0	1.8	11.2	13.7
2009 July	209.0	201.2	190.2	211.1	210.7	168.8	161.6	238.3	187.5	171.8	177.4	236.5	158.3	227.8	274.4	188.0	2.1	11.1	13.4
2009 Aug	211.3	202.1	188.8	213.3	212.9	166.9	163.7	238.5	189.3	171.9	178.6	241.4	160.5	241.2	280.8	190.2	1.1	11.0	13.3
2009 Sep	212.4	203.9	190.4	214.5	214.2	165.3	163.5	239.3	186.4	171.6	182.0	240.7	159.6	241.7	277.2	190.5	0.5	10.4	13.1
2009 Oct	213.4	205.5	191.4	215.5	215.2	166.0	164.5	241.2	187.1	172.9	184.1	238.9	159.6	237.0	274.6	189.7	0.5	11.6	12.8
2009 Nov	214.8	207.8	193.2	215.7	215.3	166.5	165.1	242.4	188.8	168.9	191.8	237.9	163.6	242.6	277.4	190.3	0.7	12.4	12.6
2009 Dec	219.5	210.9	196.9	220.8	221.2	169.7	167.6	242.9	192.1	172.0	195.2	237.9	166.7	246.2	284.6	193.5	2.2	14.0	12.5
2010 Jan	221.4	212.2	198.2	223.6	223.7	170.3	169.1	243.9	194.5	174.0	197.5	236.9	168.5	250.1	296.0	196.5	0.9	14.4	12.6
2010 Feb	225.5	217.2	202.9	226.0	227.0	170.8	170.7	248.0	197.7	177.2	200.8	238.6	162.6	257.1	294.9	201.5	1.8	15.6	12.7
2010 Mar	225.3	216.3	202.1	227.1	226.8	173.7	172.5	247.7	199.6	177.9	201.0	239.3	169.0	255.9	292.9	198.6	-0.1	14.8	12.8
2010 Apr	227.0	217.0	203.1	229.9	229.8	174.5	173.5	247.7	196.0	177.2	204.8	238.8	168.7	256.1	304.3	202.1	0.8	15.0	12.9
2010 May	227.0	218.6	205.8	227.9	228.7	172.8	174.8	247.5	193.7	177.0	203.8	238.3	169.0	263.4	305.4	204.0	0.0	12.9	12.9
2010 Jun	233.7	223.2	209.8	237.2	237.3	180.7	180.1	254.0	209.0	183.3	206.0	242.9	167.9	258.6	296.5	208.5	2.9	14.1	13.1
2010 Jul	236.0	223.8	210.2	240.7	241.2	182.5	182.1	254.8	205.8	186.3	206.1	244.1	168.5	256.4	291.2	210.6	1.0	13.0	13.3
2010 Aug	240.3	227.1	213.3	245.4	245.7	187.0	186.2	257.4	208.3	189.7	208.3	239.3	171.8	257.1	297.6	211.6	1.8	13.7	13.5
2010 Sep	241.4	230.0	215.8	245.8	244.4	181.5	185.6	266.4	211.7	189.2	215.2	242.2	177.3	262.9	297.1	212.5	0.4	13.7	13.8
2010 Oct	242.1	232.5	216.4	245.8	245.7	186.0	186.2	269.1	213.8	193.9	205.4	244.8	179.3	267.1	301.0	210.4	0.3	13.4	13.9
2010 Nov	242.3	232.1	215.0	246.7	246.1	186.8	184.9	273.0	213.6	187.7	214.2	242.6	176.4	261.2	300.1	214.6	0.1	12.8	13.9
2010 Dec	245.3	234.0	217.4	248.9	248.7	186.3	187.7	274.4	213.8	190.4	216.5	243.6	176.4	264.6	304.0	213.3	1.3	11.8	13.7
2011 Jan	248.3	237.9	218.3	246.5	255.6	184.2	188.9	276.1	214.3	188.0	209.4	246.4	177.2	267.3	306.5	215.4	1.2	12.1	13.5
2011 Feb	250.6	240.0	223.2	253.8	253.9	188.8	191.5	278.0	218.3	193.8	224.7	249.5	173.9	268.3	311.5	217.3	1.0	11.1	13.2
2011 Mar	254.1	244.2	227.0	254.7	254.5	187.7	192.3	281.2	218.9	198.5	221.5	250.0	175.7	269.2	311.2	214.6	1.4	12.8	13.0
2011 Apr	252.7	245.0	227.8	254.5	248.5	190.7	191.8	293.3	217.9	198.0	220.1	250.0	192.6	270.2	314.3	218.2	-0.5	11.3	12.7
2011 May	254.9	247.1	229.9	255.5	255.2	191.7	195.1	293.8	220.2	197.0	221.9	251.4	175.7	271.4	315.7	220.0	0.9	12.3	12.7
2011 Jun	257.5	249.0	231.5	259.0	257.3	190.2	194.8	294.8	219.6	202.5	227.2	251.2	176.5	272.2	317.0	224.3	1.0	10.2	12.3
2011 Jul	258.4	249.6	231.5	259.6	258.8	187.2	194.3	297.0	222.1	199.8	227.2	252.6	181.8	273.1	319.0	227.9	0.3	9.5	12.0
2011 Aug	262.7	251.9	234.0	266.8	265.7	193.8	196.0	301.8	226.6	203.4	233.8	253.1	179.0	273.9	319.3	231.2	1.7	9.3	11.6
2011 Sep	266.3	256.9	237.1	269.1	267.5	193.5	197.9	305.7	225.1	206.6	234.5	252.6	179.6	276.0	320.9	231.4	1.4	10.3	11.4

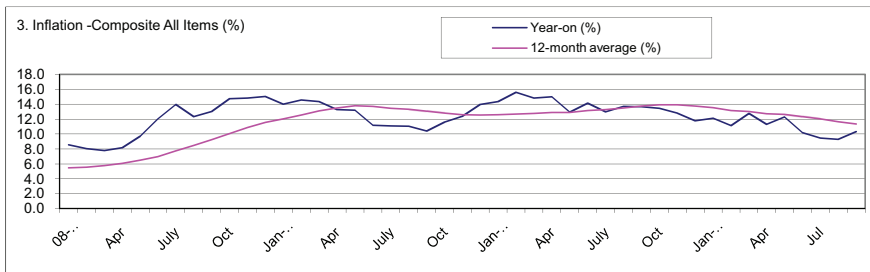


Table 2A Old Series Composite Consumer Price Index (Base September 1985 = 100)

	All Items	All Items less Farm Produce	Food	Drinks, Tobacco and Kola	Clothing and Footwear	Accommodation, Fuel and Lighting	Household Goods	Medical care and Health Exp.	Transport	Recreation, Ent., Educ. and Cult. Services	Other Services	Month-on (%)	Year-on (%)	12-month average (%)
<i>Weights</i>	1000.0	362.3	690.9	47.4	46.9	118.7	35.8	11.0	23.5	13.7	12.1			
2008 Jan	8803.9	10522.6	7695.8	9431.3	4782.3	16563.6	6297.7	5126.9	11073.3	10202.2	12716.4	1.4	8.6	5.5
Feb	8829.8	10669.6	7658.5	9340.5	4796.7	16684.0	6318.2	5095.4	11304.9	10001.3	12674.0	0.3	8.1	5.5
Mar	8897.2	10255.5	7970.3	9569.5	4716.2	16296.3	6480.2	5261.9	10797.7	10141.8	12291.4	0.8	7.8	5.8
Apr	9037.2	10435.5	8093.2	9528.5	4954.5	16514.4	6569.7	5468.2	11338.2	10099.7	12470.5	1.6	8.2	6.1
May	9208.3	10687.6	8230.2	9727.6	5028.3	16748.6	6740.2	5536.9	11251.5	10233.1	13374.1	1.9	9.7	6.5
Jun	9545.3	10957.6	8608.1	9692.5	5142.5	17305.8	6953.4	5602.1	11298.2	10198.0	13382.2	3.7	12.1	7.0
Jul	9752.7	11149.6	8834.9	9774.5	5219.7	17774.2	7068.5	5714.3	11471.7	10443.8	14057.8	2.2	13.9	7.8
Aug	9866.8	11227.7	8938.9	9780.4	5300.2	18113.3	7038.7	5649.1	11338.2	10619.4	13634.6	1.2	12.3	8.5
Sep	9975.7	11389.7	9014.5	9674.9	5293.5	18420.2	7034.4	5645.5	11298.2	10633.4	13772.9	1.1	13.0	9.2
Oct	9913.4	11317.7	8967.2	9540.2	5317.0	18266.8	7085.6	5699.8	11358.2	10682.6	14009.0	-0.6	14.7	10.1
Nov	9910.3	11264.9	8978.1	9522.1	5313.3	18010.8	7016.1	5757.3	11411.0	10789.4	14106.7	-0.03	14.8	10.9
Dec	9986.0	11377.7	9033.4	9511.0	5370.7	18299.1	7008.8	5873.5	11625.2	10745.8	14391.6	0.8	15.1	11.6
2009 Jan	10037.9	11365.7	9113.7	9516.8	5377.4	18064.9	7025.9	5935.0	11678.6	10766.9	14546.2	0.5	14.0	12.0
Feb	10115.6	11431.7	9194.0	9604.7	5374.1	18129.5	7034.4	6029.1	11545.1	10654.5	14570.7	0.8	14.6	12.6
Mar	10174.2	11473.7	9264.9	9604.7	5377.4	18121.4	7072.8	6054.4	11638.5	10647.5	14700.9	0.6	14.4	13.1
Apr	10234.9	11539.7	9335.7	9663.2	5400.9	18186.0	7213.5	6181.1	12072.3	10731.8	14782.3	0.6	13.3	13.5
May	10421.5	11743.7	9524.7	9704.2	5357.3	18468.6	7145.3	6061.7	12279.2	10865.2	14635.8	1.8	13.2	13.8
Jun	10613.4	11887.8	9742.0	9727.6	5380.8	18848.2	7213.5	6119.6	12032.3	10921.4	15140.5	1.8	11.2	13.7
Jul	10836.3	12073.8	9973.5	9885.8	5424.4	19243.9	7993.7	6217.3	11838.7	11118.1	15303.3	2.1	11.1	13.4
Aug	10955.6	12127.8	10077.5	9774.5	5494.9	19260.0	8070.4	6220.9	11918.8	11272.6	15482.3	1.1	11.0	13.3
Sep	11012.6	12235.8	10134.2	9680.8	5488.2	19324.6	7946.8	6210.0	12145.7	11209.4	15506.8	0.5	10.4	13.1
Oct	11064.5	12331.8	10167.3	9721.8	5521.8	19478.1	7976.6	6257.1	12285.9	11209.4	15441.6	0.5	11.6	12.8
Nov	11137.1	12469.8	10190.9	9751.1	5541.9	19575.0	8049.1	6112.3	12799.7	11490.3	15490.5	0.7	12.4	12.6
Dec	11382.1	12656.9	10435.5	9936.3	5625.0	19614.1	8185.9	6222.4	13030.1	11708.6	15753.8	2.2	14.0	12.5
2010 Jan	11482.3	12731.7	10567.9	9975.3	5674.9	19692.4	8290.5	6295.7	13183.7	11835.0	16001.7	0.9	14.4	12.6
Feb	11693.9	13031.0	10680.0	10004.6	5730.3	20025.2	8427.4	6411.8	13401.3	11421.4	16404.4	1.8	15.6	12.7
Mar	11682.8	12981.1	10731.0	10170.4	5791.3	20005.6	8507.9	6436.3	13414.1	11869.5	16172.1	-0.1	14.8	12.8
Apr	11771.9	13018.5	10863.5	10219.1	5824.5	20005.6	8354.9	6411.8	13670.1	11846.5	16450.9	0.8	15.0	12.9
May	11771.9	13118.3	10771.8	10121.6	5868.9	19986.1	8258.3	6405.7	13606.1	11869.5	16605.8	0.0	13.0	12.9
Jun	12117.1	13392.6	11210.0	10579.9	6046.2	20514.6	8910.3	6631.9	13746.9	11789.0	16977.6	2.9	14.2	13.1
Jul	12239.6	13430.0	11373.0	10687.2	6112.7	20573.3	8773.5	6741.9	13759.7	11835.0	17148.0	1.0	12.9	13.3
Aug	12462.4	13629.5	11597.2	10950.5	6251.3	20788.6	8878.1	6864.2	13900.5	12064.8	17225.4	1.8	13.8	13.5
Sep	12518.1	13804.1	11617.6	10628.7	6229.1	21512.9	9023.0	6845.8	14361.3	12455.5	17302.9	0.4	13.7	13.8
Oct	12551.5	13953.8	11617.6	10891.9	6251.3	21728.2	8934.5	7017.0	13708.5	12593.4	17132.5	0.3	13.4	13.9
Nov	12562.6	13928.8	11658.4	10940.7	6206.9	22041.4	9063.3	6790.8	14297.3	12386.5	17473.3	0.1	12.8	13.9
Dec	12718.5	14041.0	11760.3	10911.5	6301.2	22158.9	9111.6	6888.6	14450.9	12386.5	17364.8	1.2	11.7	13.7
2011 Jan	12874.4	14278.0	11648.2	10784.7	6339.9	22295.9	9167.9	6803.0	13977.3	12444.0	17535.2	1.2	12.1	13.5
Feb	12996.9	14402.7	11994.7	11057.7	6428.6	22452.5	9232.3	7010.9	15001.3	12214.2	17690.1	1.0	11.1	13.2
Mar	13175.1	14652.1	12035.4	10989.5	6456.3	22707.0	9457.7	7182.0	14783.7	12340.6	17473.3	1.4	12.8	13.0
Apr	13103.9	14701.9	12025.2	11165.0	6439.7	23685.7	9288.6	7163.7	14694.1	12306.1	17767.6	-0.5	11.3	12.7
May	13219.7	14826.6	12076.2	11223.5	6550.5	23724.9	9385.2	7127.0	14809.3	12340.6	17907.0	0.9	12.3	12.7
Jun	13353.3	14938.9	12208.7	11135.7	6539.5	23803.2	9361.1	7328.7	15167.7	12398.0	18263.3	1.0	10.2	12.3
Jul	13397.9	14976.3	12269.8	10960.2	6522.8	23979.4	9465.7	7230.9	15449.3	12765.7	18557.6	0.3	9.5	12.0
Aug	13620.6	15113.5	12606.1	11350.2	6578.2	24370.9	9819.9	7359.3	15602.9	12581.9	18820.9	1.7	9.3	11.6
Sep	13810.0	15400.3	12718.2	11330.7	6644.8	24684.1	9594.5	7475.4	15654.1	13076.0	18836.4	1.4	10.3	11.4

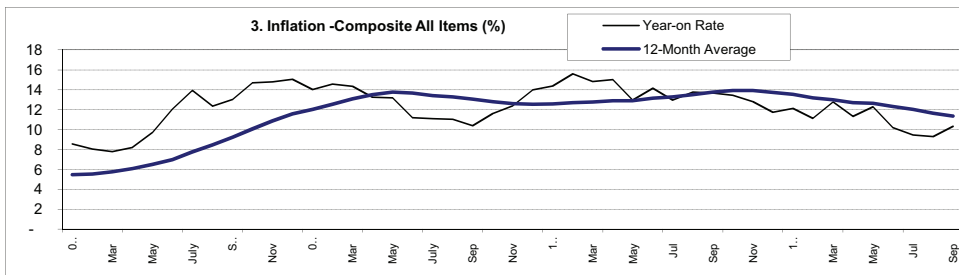


Table 3 Urban Consumer Price Index (Base November 2009 = 100)

	All Items	All Items less Farm Produce	All Items less Farm Produce and Energy	Imported Food	Food	Food & Non-Alcoholic Bev.	Alcoholic Beverage, Tobacco and Kola	Clothing and Footwear	Housing, Water, Electricity, Gas and Other Fuel	Furnishings & Household Equipment Maintenance	Health	Transport	Communication	Recreation & Culture	Education	Restaurant & Hotels	Miscellaneous Goods & Services	Month-on (%)	Year-on (%)	12-month average (%)	
Weights	1000	575.2	440.9	155.1	476.8	490.59	11.19	65.504	191.51	49.742	27.4	74.54	10.14	7.201	40.05	14.49	17.65				
2007	Jan	74.5	80.3	78.2	71.6	71.6	97.4	89.1	75.8	78.1	86.6	89.8	99.1	96.3	74.5	78.1	77.7	-0.1	11.9	11.0	
	Feb	75.3	80.3	78.8	73.0	73.0	97.8	90.2	75.2	78.0	85.0	89.5	98.3	93.2	77.3	77.9	75.2	1.1	9.2	10.5	
	Mar	77.6	82.5	81.5	75.1	75.1	95.5	90.2	80.6	79.9	84.0	84.9	98.9	91.2	73.5	74.7	92.0	3.1	11.2	10.3	
	Apr	78.2	82.5	81.5	75.9	75.8	96.6	90.2	80.8	81.3	81.4	84.2	99.1	92.5	80.4	76.6	92.3	0.7	11.2	10.1	
	May	79.2	86.0	84.2	75.4	75.4	98.6	84.9	85.6	82.3	75.7	94.4	99.1	92.0	79.7	71.5	87.3	1.3	12.4	10.3	
	Jun	79.9	85.7	83.1	76.4	76.4	98.0	84.4	84.1	84.2	80.6	93.1	99.1	96.4	79.4	83.5	81.8	0.8	12.0	10.6	
2008	Jan	84.0	89.9	90.5	80.8	80.9	101.8	91.7	87.8	89.7	91.1	92.8	101.4	98.8	89.4	91.8	87.7	0.9	12.7	10.7	
	Feb	85.2	90.9	91.3	82.1	82.2	102.6	93.0	89.2	90.1	92.0	92.5	101.5	99.6	86.7	91.9	88.6	1.4	13.1	11.1	
	Mar	85.4	91.2	91.7	82.3	82.4	103.5	92.3	88.8	90.2	94.4	92.1	101.5	99.0	85.6	96.9	89.4	0.2	10.1	11.0	
	Apr	86.9	92.5	93.2	83.9	84.0	105.7	93.4	90.1	91.4	97.5	92.5	101.5	100.7	85.2	97.4	90.7	1.7	11.1	11.0	
	May	87.3	92.8	92.5	84.6	84.6	104.8	94.0	90.4	92.1	97.5	91.5	101.5	101.3	84.5	96.5	90.4	0.6	10.3	10.8	
	Jun	89.1	94.7	95.3	86.2	86.2	103.7	95.1	93.2	95.9	96.2	91.2	99.1	98.9	84.7	98.8	91.4	2.0	11.5	10.8	
	Jul	90.4	96.6	97.6	87.3	87.3	105.4	97.7	95.6	96.5	96.6	91.5	99.3	99.3	84.7	99.7	93.0	1.5	12.9	11.0	
	Aug	91.9	98.2	99.0	88.5	88.6	104.5	97.7	98.1	96.8	95.7	92.3	99.3	98.6	86.5	101.6	92.2	1.6	12.1	11.1	
	Sep	92.3	97.9	97.7	89.2	89.2	101.6	97.3	98.7	95.9	94.2	91.8	100.7	97.1	86.6	100.7	92.7	0.5	13.5	11.5	
	Oct	92.1	97.8	98.2	88.9	89.0	98.3	97.2	98.2	97.8	94.7	92.0	99.8	97.9	88.4	102.3	92.1	-0.2	13.8	11.9	
	Nov	91.9	96.8	97.3	89.3	89.3	97.9	96.6	96.4	96.8	94.6	92.1	99.4	98.5	89.0	102.6	92.4	-0.2	12.0	12.1	
	Dec	92.8	97.8	97.9	89.6	89.7	97.5	98.5	98.8	96.2	95.9	93.9	99.3	98.6	90.9	102.7	93.7	0.9	11.4	12.0	
2009	Jan	92.8	96.6	97.8	90.5	90.5	97.6	97.8	96.4	96.3	96.3	94.0	99.3	97.8	92.3	102.0	96.0	0.0	10.4	11.8	
	Feb	93.6	96.3	97.6	92.0	92.0	98.6	98.2	95.5	96.2	98.1	93.0	99.3	97.8	90.9	103.2	95.2	0.8	9.8	11.6	
	Mar	93.9	96.5	98.0	92.4	92.4	98.8	97.9	95.5	96.5	98.3	94.1	99.3	96.7	93.0	104.1	95.1	0.4	9.9	11.5	
	Apr	94.3	97.4	98.8	92.5	92.6	99.9	98.6	96.4	98.0	99.6	95.7	99.3	97.8	89.7	104.4	95.6	0.5	8.6	11.3	
	May	95.7	98.2	98.7	94.1	94.1	100.1	96.9	98.1	96.2	97.9	97.1	99.3	98.9	96.3	104.2	98.2	1.4	9.5	11.2	
	June	97.2	98.8	99.7	96.3	96.3	100.6	97.0	98.5	97.4	99.3	96.7	99.3	99.9	96.7	106.2	98.1	1.6	9.2	11.0	
	July	98.9	99.5	100.3	98.4	98.4	102.1	99.9	100.2	98.8	100.9	95.7	100.8	100.1	97.6	100.1	98.5	1.7	9.3	10.7	
	Aug	99.6	99.7	99.4	99.3	99.3	100.7	99.9	100.6	99.7	100.3	95.1	102.1	101.2	97.4	105.2	99.9	0.7	8.4	10.4	
	Sep	99.8	99.5	99.2	99.8	99.8	99.8	99.7	100.3	101.1	98.8	96.0	101.5	100.5	99.5	99.7	100.8	0.2	8.1	10.0	
	Oct	99.8	99.9	99.3	99.6	99.6	99.8	100.3	100.8	100.9	99.9	96.8	100.9	100.1	98.9	98.0	100.7	0.0	8.3	9.5	
	Nov	100.0	100.0	100.0	100.0	100.0	100.0	100.0	100.0	100.0	100.0	100.0	100.0	100.0	100.0	100.0	100.0	0.2	8.8	9.3	
	Dec	101.4	101.3	101.8	100.5	101.6	101.7	99.9	100.9	101.4	100.8	101.6	102.0	99.2	104.2	100.7	103.2	1.4	9.3	9.1	
2010	Jan	102.6	102.5	102.7	101.1	102.8	102.8	100.7	103.1	102.6	101.9	102.4	103.5	99.7	105.8	102.5	108.3	102.8	1.2	10.5	9.1
	Feb	104.4	105.4	105.4	103.1	102.9	103.6	101.6	103.6	104.4	103.6	105.4	103.9	100.1	99.4	108.0	106.7	106.3	1.8	11.6	9.3
	Mar	106.0	105.7	105.9	103.5	106.1	105.9	103.8	105.9	104.8	106.1	106.8	108.1	100.9	107.1	106.8	107.5	106.1	1.5	12.9	9.6
	Apr	105.9	105.4	105.6	103.4	106.3	106.1	103.9	106.0	103.9	105.5	106.9	106.7	100.8	108.3	106.6	111.5	107.0	-0.1	12.2	9.9
	May	103.8	103.7	104.9	104.5	103.8	104.7	102.0	104.7	99.2	103.0	104.1	105.9	101.2	105.0	105.7	109.3	104.8	-1.9	8.5	9.8
	Jun	107.7	107.0	108.0	110.0	108.5	108.6	106.8	108.7	105.2	108.7	107.9	106.2	103.4	104.0	106.8	108.6	109.3	3.7	10.8	9.9
	Jul	109.1	107.9	108.4	109.1	110.4	110.6	109.2	110.4	103.9	108.4	111.6	109.3	104.0	102.8	106.7	106.4	110.6	1.3	10.3	10.0
	Aug	110.5	109.0	109.9	111.0	112.8	112.9	110.0	112.1	103.0	110.7	113.0	110.0	100.9	106.4	108.1	111.6	111.7	1.3	10.9	10.2
	Sep	110.6	109.4	110.5	113.0	112.6	112.4	106.6	112.4	106.0	110.5	110.0	112.2	101.4	110.1	107.6	107.3	109.2	0.1	10.9	10.4
	Oct	111.2	110.0	110.1	114.3	113.5	113.5	109.6	111.6	110.7	109.4	110.8	105.8	101.4	109.0	108.4	106.0	110.8	0.5	11.5	10.7
	Nov	111.7	111.3	111.1	113.4	112.8	112.8	110.0	112.2	111.0	111.1	111.8	110.4	101.1	109.7	107.9	107.8	113.1	0.5	11.7	10.9
	Dec	112.2	111.2	111.0	113.5	113.4	113.4	109.7	113.8	111.8	111.5	112.9	111.7	100.8	109.2	109.3	111.3	112.7	0.4	10.7	11.0
2011	Jan	110.7	108.5	106.0	67.2	111.7	116.5	107.8	114.9	110.8	112.4	111.6	108.3	105.8	108.1	111.2	113.2	111.6	-1.4	7.9	10.8
	Feb	114.2	114.1	114.4	117.6	115.5	115.2	110.2	115.1	115.5	114.4	118.6	111.6	101.9	103.7	111.7	114.9	114.6	3.2	9.4	10.6
	Mar	115.0	114.9	114.2	118.0	116.0	116.3	109.8	115.7	118.2	115.1	120.5	111.9	101.8	105.1	111.6	115.9	113.8	0.7	8.5	10.3
	Apr	115.5	116.3	116.1	114.9	116.4	115.5	112.3	116.3	116.1	114.8	117.8	112.2	102.5	106.1	111.6	115.1	115.5	0.5	9.1	10.0
	May	115.8	116.8	116.7	116.0	116.7	116.2	112.9	117.2	116.0	116.4	120.1	116.2	102.8	105.6	111.7	115.9	114.7	0.2	11.5	10.2
	Jun	116.6	116.6	116.3	112.4	118.0	117.2	112.1	117.2	116.3	115.4	121.1	116.5	102.0	106.5	111.7	116.8	114.7	0.7	8.3	10.0
	Jul	116.3	116.8	115.6	111.8	118.0	117.6	112.2	117.4	118.3	116.7	118.8	119.0	103.4	104.9	112.5	117.3	115.8	-0.3	6.6	9.7
	Aug	118.3	118.7	117.8	113.4	119.9	119.1	113.8	117.9	119.9	119.7	121.1	122.1	103.4	107.9	112.6	116.1	116.9	1.7	7.1	9.4
	Sep	120.0	121.3	119.6	115.5	120.7	119.8	114.1	118.4	124.8	120.2	123.6	121.3	103.7	108.2	113.2	117.7	117.2	1.4	8.4	9.2

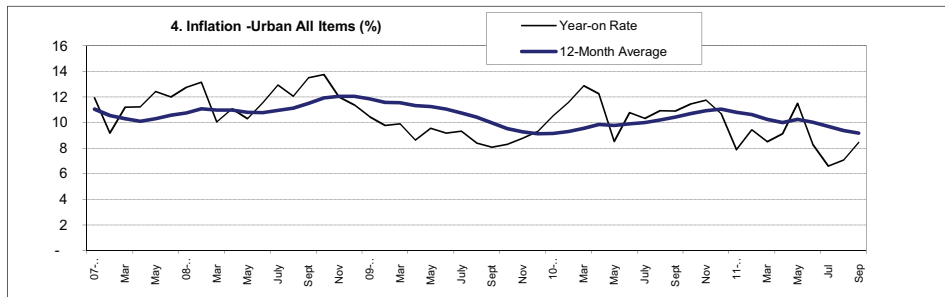
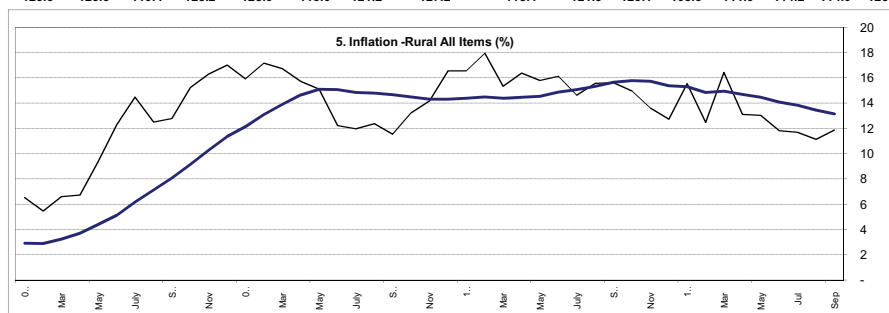


Table 4 Rural Consumer Price Index (Base November 2009 = 100)

	All items	All items less Farm Produce	All items less Farm Produce and Energy	Imported Food	Food	Food & Non Alcoholic Bev.	Alcoholic Beverage, Tobacco and Kola	Clothing and Footwear	Housing Water, Electricity, Gas and Other Fuel	Furnishings & Household Equipment Maintenance	Health	Transport	Communication	Recreation & Culture	Education	Restaurant & Hotels	Miscellaneous Goods & Services	Month-on (%)	Year-on (%)	12-month average (%)
Weights	1000.0	503.1	417.4	113.7	532.3	540.9	10.6	85.7	147.2	50.7	32.2	57.2	4.0	6.7	38.9	10.1	15.8			
2008																				
Jan	76.7	81.7	78.1		73.7	74.0	90.3	80.5	80.6	71.2	77.5	76.0	67.7	82.8	61.8	68.3	77.4	1.7	6.5	2.9
Feb	76.4	83.0	81.8		72.7	73.0	87.2	79.5	80.3	71.3	75.8	81.4	67.3	79.5	64.7	70.7	76.1	-0.3	5.5	2.9
Mar	77.2	78.0	75.4		76.8	77.1	91.4	77.3	76.4	74.5	78.8	71.5	65.4	81.8	64.5	69.8	70.8	1.1	6.6	3.2
Apr	78.4	79.2	78.0		77.9	78.2	87.8	85.0	77.2	75.5	82.4	82.0	87.6	80.2	62.6	74.4	71.8	1.5	6.7	3.7
May	80.4	82.3	81.0		79.5	79.7	93.4	87.2	79.6	78.5	84.5	81.9	94.3	81.6	65.7	89.3	82.9	2.6	9.4	4.4
Jun	84.1	84.6	85.0		83.9	84.1	94.0	90.2	82.4	80.4	87.6	83.4	94.3	82.6	72.4	91.8	82.1	4.6	12.3	5.1
Jul	86.2	85.9	82.7		86.5	86.6	93.8	90.4	84.8	82.4	90.8	86.6	95.6	85.8	77.2	91.2	88.9	2.5	14.5	6.2
Aug	87.0	86.1	84.7		87.4	87.5	95.1	93.5	85.5	81.7	89.6	82.5	95.6	88.7	81.0	95.6	84.4	1.0	12.5	7.1
Sep	88.3	88.2	86.4		88.2	88.3	96.2	93.6	88.3	82.1	90.7	82.5	95.2	89.8	79.7	95.0	85.7	1.4	12.8	8.1
Oct	87.6	87.4	86.7		87.7	87.8	97.2	94.7	87.2	82.0	92.0	83.4	95.2	89.9	81.1	94.9	89.1	-0.8	15.2	9.2
Nov	87.6	87.3	86.6		87.7	87.7	97.3	95.1	86.5	81.2	93.8	84.3	95.2	91.1	81.0	95.3	89.9	0.0	16.3	10.3
Dec	88.2	88.1	88.7		88.3	88.3	97.5	95.2	86.8	81.4	96.2	85.8	95.3	90.5	84.4	97.7	92.2	0.7	17.0	11.4
2009																				
Jan	88.9	88.5	90.0		89.1	89.1	97.5	96.2	87.1	81.7	97.9	86.6	95.2	91.2	84.5	97.8	92.1	0.8	15.9	12.1
Feb	89.5	89.5	90.2		89.6	89.6	98.3	95.7	89.0	81.9	99.0	85.6	95.2	89.7	85.4	98.8	93.1	0.7	17.2	13.1
Mar	90.2	89.8	90.8		90.5	90.5	98.0	96.1	88.8	82.5	99.6	85.7	95.2	90.2	87.0	97.9	94.7	0.7	16.7	13.9
Apr	90.7	90.2	91.7		91.3	91.3	98.0	96.2	88.5	84.4	102.4	92.0	95.2	90.8	88.9	99.5	95.3	0.6	15.7	14.6
May	92.6	92.3	93.8		93.3	93.3	98.8	96.5	89.7	84.2	100.2	94.0	95.2	91.9	88.4	98.0	91.3	2.1	15.1	15.1
June	94.4	93.7	95.1		95.4	95.3	98.6	97.1	93.4	84.8	100.8	89.6	95.2	92.1	88.6	98.2	97.5	1.9	12.2	15.1
July	96.5	95.5	97.5		97.7	97.7	100.4	95.7	95.9	99.6	102.5	87.2	98.3	94.7	90.4	98.3	99.0	2.3	12.0	14.8
Aug	97.8	96.1	96.9		98.8	98.7	99.6	98.3	95.6	100.6	103.0	89.9	100.9	96.2	101.3	98.9	100.1	1.3	12.4	14.8
Sep	98.5	97.4	98.2		99.4	99.3	98.6	98.4	96.8	97.2	103.9	93.2	100.9	95.8	99.8	100.1	99.6	0.7	11.5	14.7
Oct	99.2	98.4	99.0		100.0	100.0	99.5	98.9	97.9	98.0	104.4	94.6	100.0	96.0	96.6	99.6	98.9	0.7	13.2	14.5
Nov	100.0	100.0	100.0	100.0	100.0	100.0	100.0	100.0	100.0	100.0	100.0	100.0	100.0	100.0	100.0	100.0	100.0	0.8	14.2	14.3
Dec	102.8	101.7	102.1	102.3	103.1	103.5	103.5	102.0	99.2	102.4	102.0	101.6	100.6	99.9	102.1	102.0	101.9	2.8	16.6	14.3
2010																				
Jan	103.6	101.9	102.4	102.2	104.4	104.9	103.6	101.8	98.9	103.9	103.5	102.7	99.5	100.7	103.6	105.5	103.7	0.8	16.5	14.4
Feb	105.6	103.8	104.7	103.3	106.4	106.9	103.5	103.3	100.6	105.5	104.5	105.3	100.5	99.5	104.3	106.0	105.6	1.9	17.9	14.5
Mar	104.0	102.8	103.5	102.6	104.6	104.9	104.7	103.3	100.0	105.3	104.0	102.1	100.4	100.1	104.4	104.0	103.0	-1.5	15.3	14.4
Apr	105.6	103.6	104.7	106.6	106.8	107.2	105.6	104.3	100.8	102.3	103.3	106.8	100.0	98.7	104.7	108.2	105.5	1.5	16.4	14.5
May	107.2	106.5	107.9	105.4	107.2	107.5	105.3	106.8	104.6	102.3	105.4	106.6	99.4	101.8	111.0	107.7	109.1	1.6	15.8	14.5
Jun	109.6	107.8	109.2	109.2	111.2	111.5	109.9	109.4	104.4	112.4	108.9	108.4	101.0	101.5	106.4	105.4	109.9	2.2	16.1	14.9
Jul	110.7	107.6	109.2	109.5	112.6	113.2	109.9	110.2	106.2	109.6	109.2	105.9	101.4	103.1	104.9	103.9	110.7	0.9	14.6	15.1
Aug	113.0	109.6	110.8	111.4	114.7	115.2	114.2	113.4	108.9	109.9	111.8	107.4	100.4	103.9	104.3	103.7	110.7	2.1	15.6	15.3
Sep	113.8	111.7	112.7	114.1	115.1	114.5	110.9	112.4	113.1	113.5	113.6	112.2	102.2	106.9	109.0	107.0	113.8	0.7	15.6	15.7
Oct	114.0	113.5	113.6	113.9	114.4	114.5	113.5	113.9	111.2	116.4	118.1	108.1	104.1	110.0	111.5	110.6	110.5	0.1	15.0	15.8
Nov	113.6	112.1	111.5	116.5	115.7	115.4	114.0	111.8	113.9	114.8	110.5	112.8	102.7	106.2	107.5	108.5	112.6	-0.3	13.6	15.7
Dec	115.9	113.8	113.7	117.0	117.1	117.2	113.7	113.6	114.3	114.7	112.6	114.0	103.6	106.6	109.0	108.2	111.5	2.0	12.7	15.4
2011																				
Jan	119.7	119.5	118.9	120.1	116.5	120.5	113.0	114.0	116.4	114.5	111.1	110.0	101.8	108.5	109.4	108.2	114.5	3.3	15.6	15.3
Feb	118.8	116.7	116.4	129.4	119.4	120.2	116.1	116.8	114.1	116.6	111.4	121.9	107.4	108.4	109.7	110.1	113.8	-0.8	12.5	14.9
Mar	121.1	119.6	120.2	120.6	119.9	119.8	115.2	117.3	114.2	116.6	115.0	118.4	107.8	109.2	110.6	109.1	111.9	1.9	16.4	15.0
Apr	119.4	119.2	119.4	122.6	121.1	120.10	116.4	116.1	125.1	116.0	116.7	116.9	107.2	107.8	111.2	111.9	114.1	-1.3	13.1	14.7
May	121.2	120.6	120.8	124.4	120.1	120.40	116.9	119.0	125.5	116.7	113.8	115.4	108.1	108.8	112.1	112.0	116.4	1.5	13.0	14.5
Jun	122.6	122.4	122.8	111.5	121.9	121.49	116.0	118.6	126.0	117.1	118.8	120.1	108.7	109.2	112.6	112.1	120.6	1.1	11.8	14.1
Jul	123.6	122.8	123.4	113.3	122.4	122.45	112.5	117.9	126.0	118.2	117.9	122.1	108.5	116.2	112.8	113.1	123.2	0.8	11.7	13.8
Aug	125.6	123.3	123.8	118.1	126.9	127.0	118.6	119.4	128.4	120.1	119.9	121.8	108.8	110.9	113.2	114.2	125.4	1.6	11.1	13.5
Sep	127.4	125.3	125.3	119.4	128.2	128.0	118.0	121.2	127.2	118.4	121.3	123.1	108.3	111.0	114.2	114.0	125.2	1.4	11.9	13.2



**Table 5 Combined Urban And Rural State Consumer Price Index
(Base Period: November 2009 = 100)**

State	Sep-10		Aug-11		Sep-11	
	Food	All Items	Food	All Items	Food	All Items
Abia	117.9	114.0	121.6	113.7	119.2	118.0
Abuja	119.1	113.5	128.4	124.6	124.8	122.4
Adamawa	111.7	109.4	122.8	119.7	120.6	114.5
Akwa Ibom	119.1	115.0	126.5	125.8	124.0	123.0
Anambra	119.7	114.7	121.3	118.0	117.9	115.9
Bauchi	114.9	114.7	130.0	127.1	138.4	131.9
Bayelsa	120.0	118.5	126.6	124.8	126.6	123.0
Benue	106.9	107.8	128.2	125.3	122.7	121.8
Borno	104.6	104.2	102.2	103.3	130.6	133.2
Cross River	119.6	113.4	134.7	131.7	129.2	130.6
Delta	116.8	111.0	124.2	124.4	115.5	119.3
Ebonyi	118.4	116.4	110.5	103.2	110.9	110.2
Edo	111.5	107.8	133.5	141.9	129.1	138.5
Ekiti	108.2	109.0	120.5	122.3	113.8	118.8
Enugu	111.4	111.5	111.7	107.6	125.9	118.1
Gombe	103.1	102.4	102.5	102.5	124.4	127.6
Imo	109.6	107.5	118.4	109.8	135.6	125.7
Jigawa	108.0	109.0	133.9	131.4	128.2	128.9
Kaduna	108.7	107.6	130.2	127.0	125.9	125.3
Kano	107.6	107.9	134.9	130.7	132.1	129.4
Katsina	110.0	104.5	131.7	121.5	130.9	126.5
Kebbi	108.7	109.6	125.7	126.6	121.0	125.2
Kogi	110.6	111.3	126.8	127.7	113.7	119.0
Kwara	108.9	108.0	121.4	133.4	121.8	140.5
Lagos	123.2	119.9	124.2	122.3	115.2	116.4
Nassarawa	106.4	107.8	125.9	123.9	119.5	117.7
Niger	116.4	113.5	122.2	130.7	119.8	125.7
Ogun	114.4	112.9	119.9	119.4	117.1	117.0
Ondo	111.5	109.9	128.1	127.0	119.7	118.7
Osun	108.3	106.9	122.3	121.2	109.7	110.2
Oyo	112.4	111.1	121.4	122.7	118.8	120.4
Plateau	110.2	110.4	121.6	123.6	122.6	122.2
Rivers	124.8	120.4	122.6	115.1	123.5	116.4
Sokoto	104.4	107.8	115.8	125.8	115.4	120.4
Taraba	108.7	108.9	103.5	104.2	114.3	116.2
Yobe	114.5	112.6	101.6	102.0	125.7	123.1
Zamfara	109.9	109.2	121.3	123.3	125.6	123.0

Note: *Note: Indices may not be used for inter-state price comparison because market baskets differ from state to state*

Table 5 Composite CPI Component Contribution To Overall Change **September-11**

Code	Weights	Month-on		Year-on		12-Month Average	
		Change %	Contribution	Change %	Contribution	Change %	Contribution
All Items	1000.0	1.4	1.4	10.4	10.4	11.4	11.4
All Items less Farm Produce.	535.9	1.9	1.0	11.5	6.1	11.9	6.3
All Items less Farm Produce & Energy	428.1	1.3	0.5	9.8	4.2	10.9	4.6
Food	507.0	0.99	0.51	9.6	4.9	11.2	5.7
Food & Non Alcoholic Beverages	518.0	0.8	0.4	9.5	5.0	11.1	5.8
Alcoholic Beverage, Tobacco & Kola	10.9	-0.2	0.0	6.7	0.1	8.2	0.1
Clothing & Footwear	76.5	1.0	0.1	6.7	0.5	10.0	0.8
Housing Water, Electricity, Gas & Other Fuel	167.3	1.3	0.2	14.8	2.4	14.8	2.4
Furnishings & Household Equipment & Maintenance	50.3	-0.6	0.0	6.3	0.3	10.1	0.5
Health	30.0	1.6	0.0	9.3	0.3	10.0	0.3
Transport	65.1	0.3	0.0	9.0	0.6	10.2	0.7
Communication	6.8	-0.2	0.0	4.3	0.0	3.9	0.0
Recreation & Culture	6.9	-2.4	0.0	-1.4	0.0	5.4	0.0
Education	39.4	0.8	0.0	5.0	0.2	6.3	0.2
Restaurant & Hotels	12.1	0.5	0.0	8.0	0.1	6.5	0.1
Miscellaneous Goods & Services	16.6	0.1	0.0	8.8	0.1	9.1	0.2

CPI Composite: Contribution: Month-on Change

	Data Columns				
	Weights	Aug-11	Sep-11	% Change	Contrib (% p)
All Items	1000.0	122.27	124.04	1.45	1.45
All Items less Farm Produce.	535.9	121.17	123.45	1.88	1.00
All Items less Farm Produce & Energy	428.1	121.08	122.64	1.29	0.55
Food	507.0	123.68	124.91	0.99	0.51
Food & Non Alcoholic Beverages	518.0	123.40	124.36	0.78	0.41
Alcoholic Beverage, Tobacco & Kola	10.9	116.40	116.23	-0.15	0.00
Clothing & Footwear	76.5	118.75	119.93	1.00	0.07
Housing Water, Electricity, Gas & Other Fuel	167.3	124.51	126.10	1.28	0.22
Furnishings & Household Equipment & Maintenance.	50.3	119.95	119.21	-0.62	-0.03
Health.	30.0	120.43	122.34	1.58	0.05
Transport	65.1	121.94	122.28	0.28	0.02
Communication	6.8	106.36	106.20	-0.15	0.00
Recreation & Culture.	6.9	109.53	106.88	-2.42	-0.01
Education	39.4	112.90	113.77	0.77	0.03
Restaurant & Hotels	12.1	115.10	115.69	0.51	0.01
Miscellaneous Goods & Services	16.6	121.49	121.56	0.05	0.00

CPI Composite: Contribution: Year-on Change

	Weights	Data Columns			Contrib (% p)
		Sep-10	Sep-11	% Change	
All Items	1000.0	112.4	124.04	10.38	10.38
All Items less Farm Produce.	535.9	110.7	123.45	11.54	6.09
All Items less Farm Produce & Energy	428.1	111.7	122.64	9.78	4.16
Food	507.0	114.0	124.91	9.59	4.93
Food & Non Alcoholic Beverages	518.0	113.5	124.36	9.54	4.99
Alcoholic Beverage, Tobacco & Kola	10.9	109.0	116.23	6.68	0.07
Clothing & Footwear	76.5	112.4	119.93	6.69	0.51
Housing Water, Electricity, Gas & Other Fuel	167.3	109.9	126.10	14.76	2.42
Furnishings & Household Equipment & Maintenance.	50.3	112.1	119.21	6.34	0.32
Health.	30.0	112.0	122.34	9.26	0.28
Transport	65.1	112.2	122.28	9.00	0.58
Communication	6.8	101.8	106.20	4.30	0.03
Recreation & Culture.	6.9	108.4	106.88	-1.38	-0.01
Education	39.4	108.4	113.77	4.99	0.19
Restaurant & Hotels	12.1	107.1	115.69	8.00	0.09
Miscellaneous Goods & Services	16.6	111.7	121.56	8.79	0.15

CPI Composite: Contribution: 12 Month average-on Change

	Data Columns				
	Weights	Sep-10	Sep-11	% Change	Contrib (% p)
All Items	1000.0	105.74	117.76	11.37	11.37
All Items less Farm Produce.	535.9	104.65	117.08	11.87	6.30
All Items less Farm Produce & Energy	428.1	105.37	116.84	10.89	4.65
Food	507.0	106.48	118.38	11.17	5.70
Food & Non Alcoholic Beverages	518.0	106.67	118.55	11.14	5.82
Alcoholic Beverage, Tobacco & Kola	10.9	104.89	113.45	8.16	0.09
Clothing & Footwear	76.5	105.58	116.18	10.04	0.77
Housing Water, Electricity, Gas & Other Fuel	167.3	102.93	118.19	14.82	2.41
Furnishings & Household Equipment & Maintenance.	50.3	105.22	115.81	10.07	0.50
Health.	30.0	105.83	116.41	9.99	0.30
Transport	65.1	104.92	115.63	10.21	0.66
Communication	6.8	100.71	104.66	3.92	0.03
Recreation & Culture.	6.9	102.53	108.08	5.41	0.04
Education	39.4	104.55	111.13	6.29	0.25
Restaurant & Hotels	12.1	105.53	112.37	6.48	0.08
Miscellaneous Goods & Services	16.6	105.96	115.56	9.06	0.15